

# Ponsanooth Road Safety Group

Meeting – 30<sup>th</sup> March 2023. 7pm Hall Meeting Room.

Attendees – Hannah, Darren W, Darren L, Lorna

## Agenda:

1. Minutes Approval
2. Apologies
3. Solar Speed Camera – Data Review
4. Second Portable Speed Camera Funding Update
5. Speed Watch Update
6. Village Gateway
7. Footpaths
8. Any Other Business
9. Next Meeting

## Minutes

### 1. Apologies

Sally, David, Chris

### 2. Approval of last meetings minutes

Group approved minutes.

### 3. Solar Speed Camera Data Review

The data for the months of March was downloaded from the sign for review.

The sign records the number of vehicles and the average speed for the total number of vehicles every half hour. It also records the maximum speed registered within each half hour block. It records traffic travelling in both directions.

*March Statistical Summary – Location: Village Hall St Michaels Road Westbound*

DIRECTION	AVERAGE SPEEDS			NUMBER MEASUREMENTS/ VEHICLES	MIN MAXIMUM SPEED	MAX MAXIMUM SPEED
	MEAN SPEED	MEDIAN SPEED	MODAL SPEED			
Incoming - Westbound	22.05	20.76	20.00	78,240	16	60
Outgoing - Eastbound	24.00	22.69	27.00	95,834	17	62

The Incoming data is recording the traffic flow down the hill past the Village Hall, and the Outgoing data is the traffic travelling up the hill out of the village.

The mean (average, average speed recorded) and modal (most common average speed recorded over the month) are very similar in both directions compared to the previous data reviewed since installation.

Out of interest the maximum speeds recorded for incoming and outgoing traffic over the two month period where recorded between 8pm and midnight. Corresponding with

previous trends, speeds increase on the road as traffic volumes decrease between 7pm and 7am.

The average speed distribution pie charts (attached to these minutes) show that for the months of December and January the greatest percentage of vehicles travelling into the village past the speed monitor on St Michaels road are between 0 Mph and 20 Mph. The highest percentage of vehicles travelling out of the village is travelling at 21 Mph to 30 Mph. This pattern is similar to the previous months data since the sign has been installed.

When the average speeds for each half hour data set are plotted against the time of day it is clear to see that the average speed distributions between midnight and 7am are the highest with the biggest range between readings. During the peak times of 7am and 7pm the average speeds recorded are generally lower with a narrower range of speeds recorded over the half hour period. Average speeds then trend upwards from 7pm until midnight but with a narrower range than those recorded in the early hours of the morning. These plots will be useful to help identify ideal times for speed watch surveys to support the speed monitor data. Scatter plots displaying these trends and ranges over the month are attached to the minutes.

The sign will be rotated to alter traffic travelling up the road towards Falmouth to their speeds, with the hope it reduces the average speeds travelling up the hill by 10mph.

It is proposed that we apply to grant sources for funding for a feasibility study looking at St Michaels Road primarily with regards to parking and speed reduction.

Lorna volunteered to look into Independent Transport Planners.

#### **4. Review of Speed Limits in Parish**

Area's identified for speed limit review:

- Laity Moor
- Frog Hill – 60 Mph
- Lower Treluswell
- Roskrow
- Ponsanooth to Burnthouse
- Burnthouse
- Pelean Cross – Feasibility study for the junction needs to be the three parishes jointly as on the boundary of all three.
- Goonreve

#### **5. Speed Watch Update**

No great changes. Weather has prevented one survey. Now evenings are getting lighter may open up some evening surveys. Alongside a post to the wider community asking for new volunteers.

#### **6. Footpaths**

Need to look into land ownership in the areas outlined on the plans (see appendix).

Consider application for Feasibility Study with Match Funding from the developer for foot path from Pelean Cross to Village Centre.

## **7. Any Other Business**

- Rail halt update – need to consider pedestrian access to site from village centre.
- Man hole covers loose on the St Michaels Road – Darren L following up with South West Water.
- Parking at Village Hall when large event becoming a hazard on St Michaels Road, group to contact Hall committee and ask if it can be requested on large event bookings for parking overflow to be considerate of driveways on St Michaels Road, or use public parking on the playing fields.

## **8. Date of next meeting**

Thursday 27<sup>th</sup> April, 7pm, Village Hall

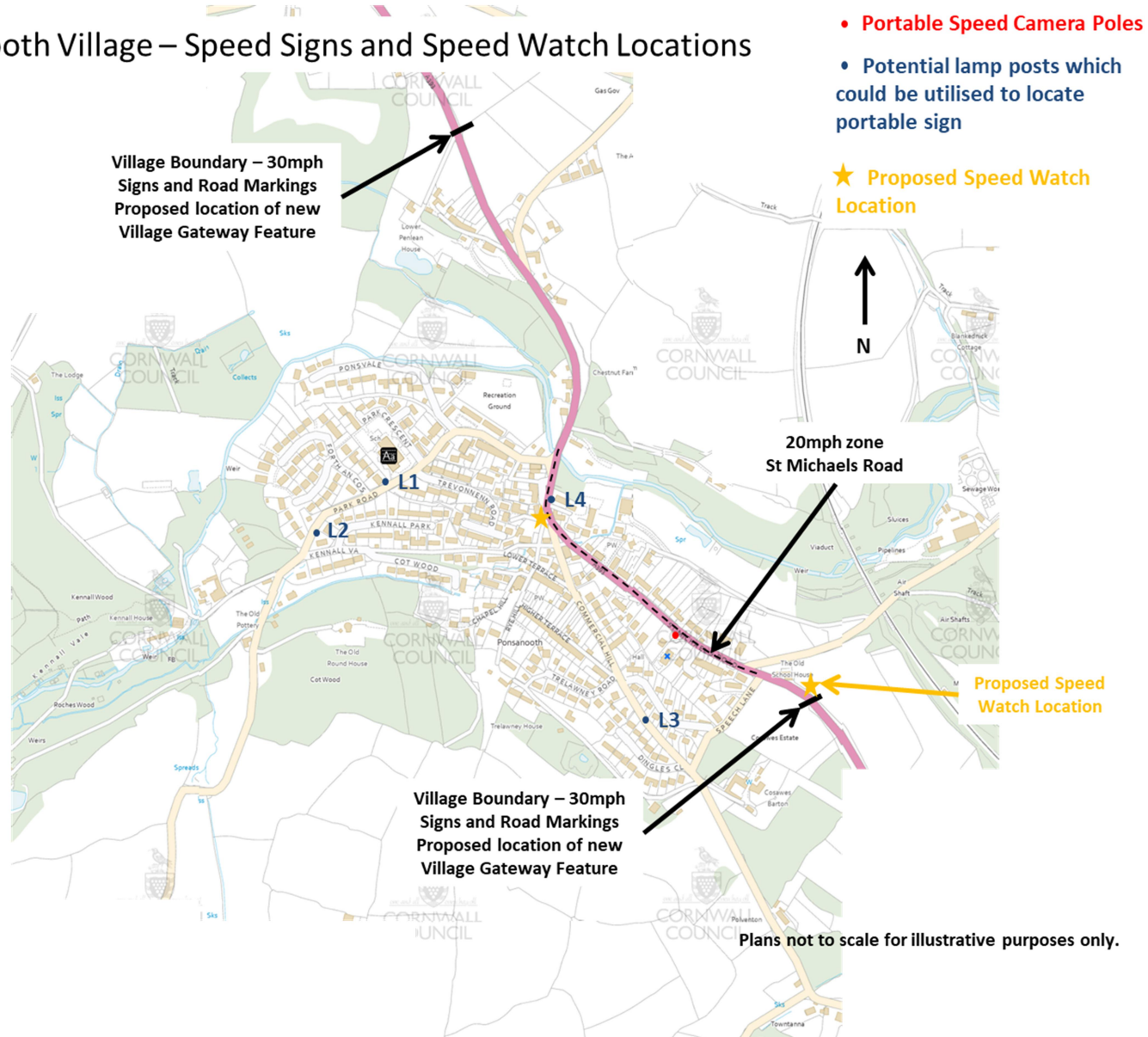
### **Current Projects:**

- 30mph Wheelie Bin Stickers – distribute to properties at the Western End of St Michaels Road in the 30mph zone.
- Village Gateways – Design and location will be consulted at on in the near future all being well.
- Pavement Widening Opposite the Stag Hunt Inn – looking at alternative funding streams.
- H Lines on St Michaels Road Driveways
- Safer Streets Project with Village School
- Poplar Cottage Safer Pedestrian Area – Peter Williams Councillor to contact residents.
- Footpaths – to come under a new sub-group.
  - Link from Western End of the Village to Village Centre – 10k of funding from the old garage developer to put in the footpath link.
  - Link from village centre to Viaduct works and Cosaws.
- Parking Issues in the village
  - Island adjacent to the Stag Hunt Inn.
  - St Andrews Terrace.
  - Commercial Hill.
- Planters – need to decide on locations in the village when received them after the Jubilee.
- Speed Limit Zones and Signage – including Lower Treluswell 60mph zone.

# Ponsanooth Road Safety Group

Meeting – 30<sup>th</sup> March 2023. 7pm Hall Meeting Room.

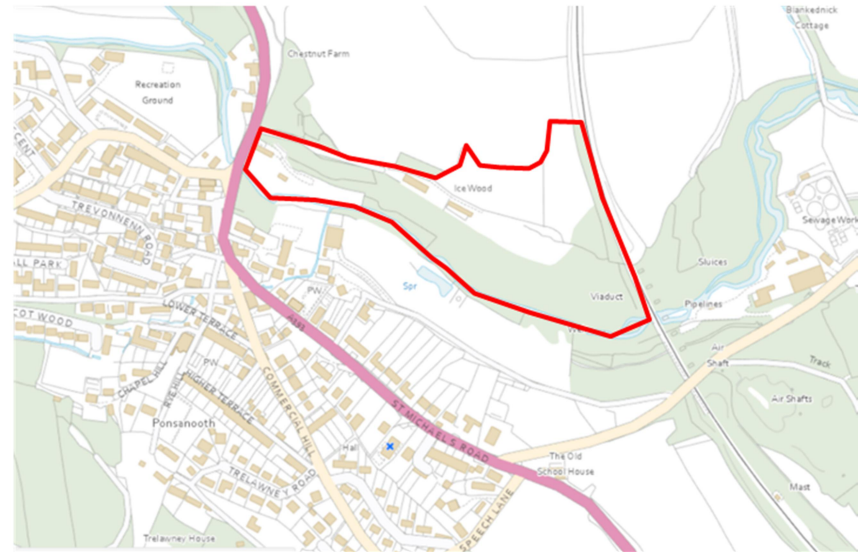
## Ponsanooth Village – Speed Signs and Speed Watch Locations



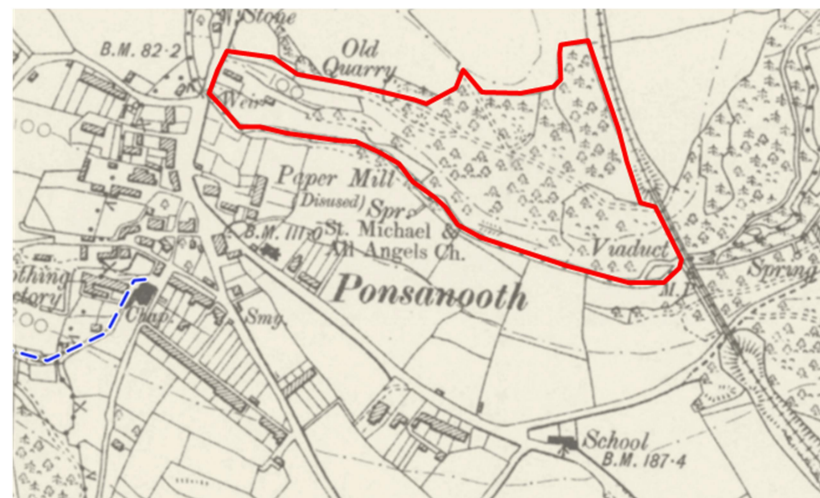
Northern Village Proposed Footpath Location



Southern Village Proposed Footpath Location



Southern Village Proposed Footpath Location 1888 map

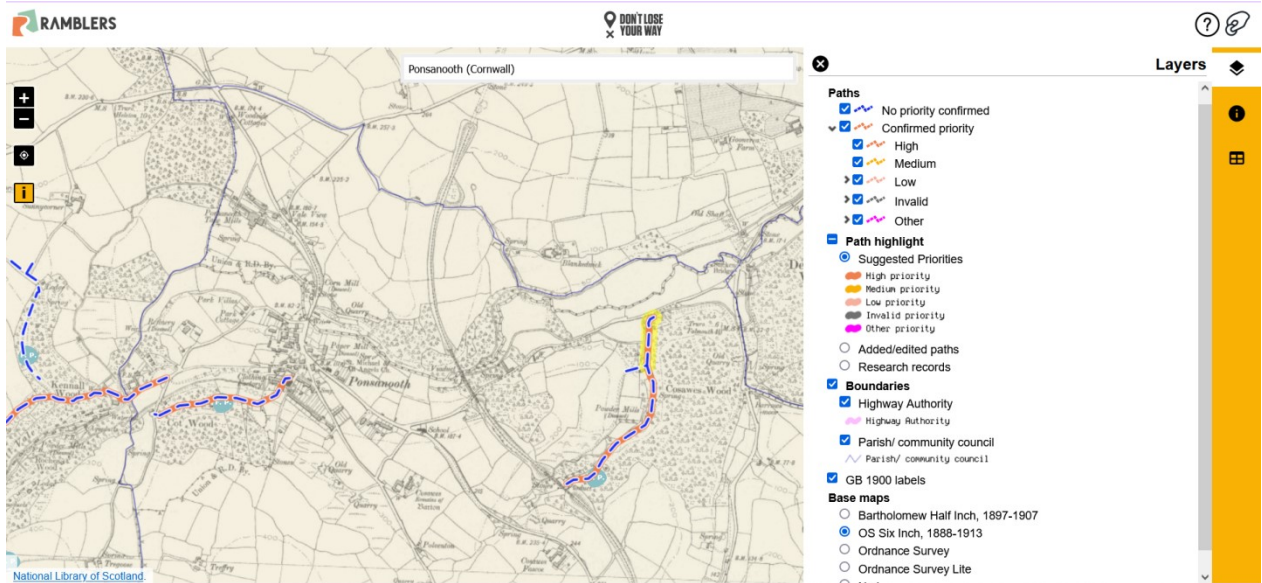
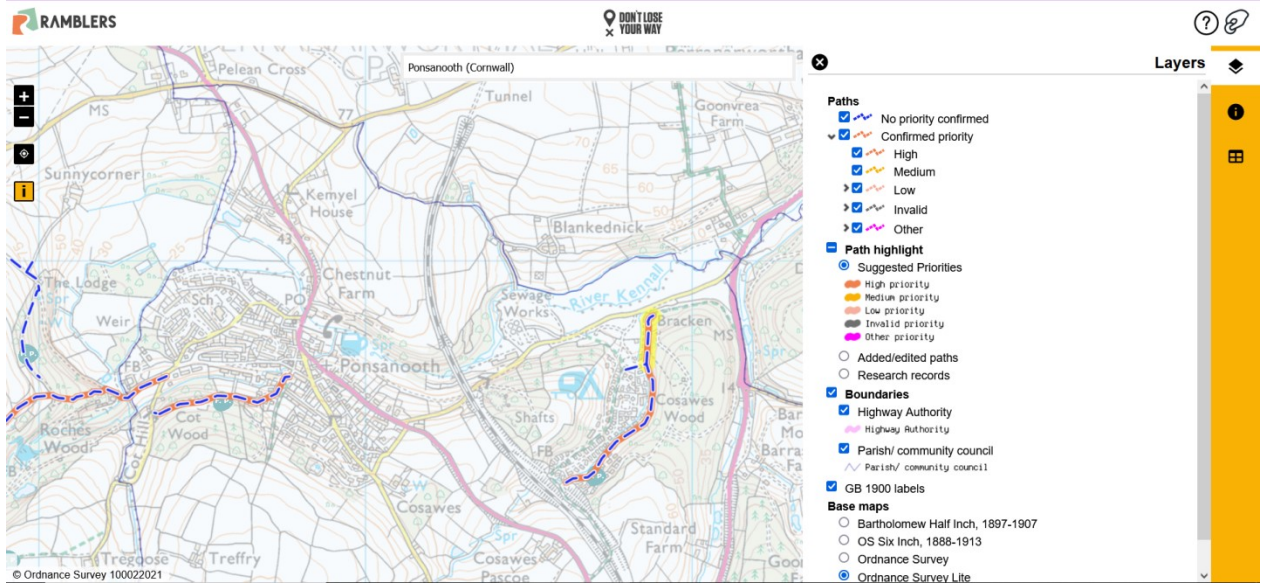




# Ponsanooth Road Safety Group

Meeting – 30<sup>th</sup> March 2023. 7pm Hall Meeting Room.

## Ramblers Lost Footpath Campaign Map – Map Area includes the two proposed footpath locations

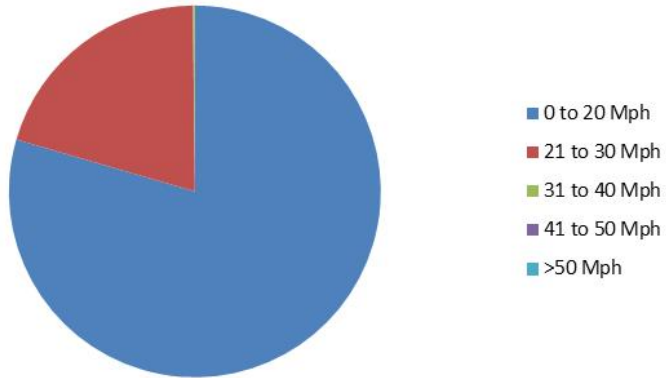


# Ponsanooth Road Safety Group

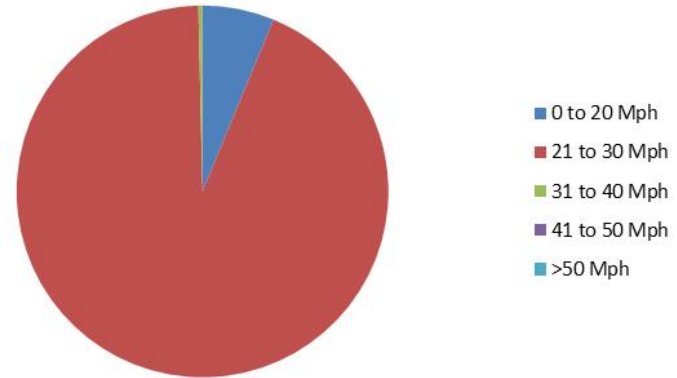
Meeting – 30<sup>th</sup> March 2023. 7pm Hall Meeting Room.

## March Average Speed Camera Plots

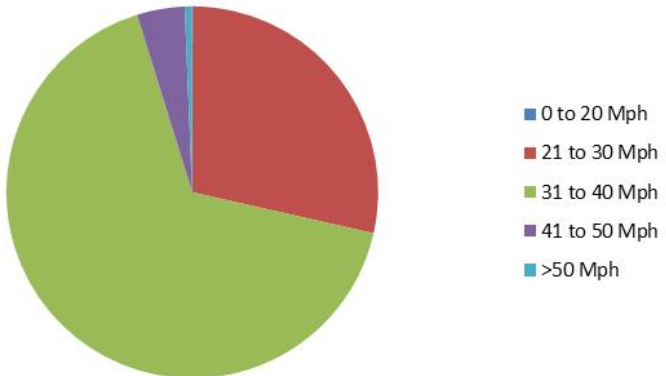
Average Speed Distribution - Incoming March



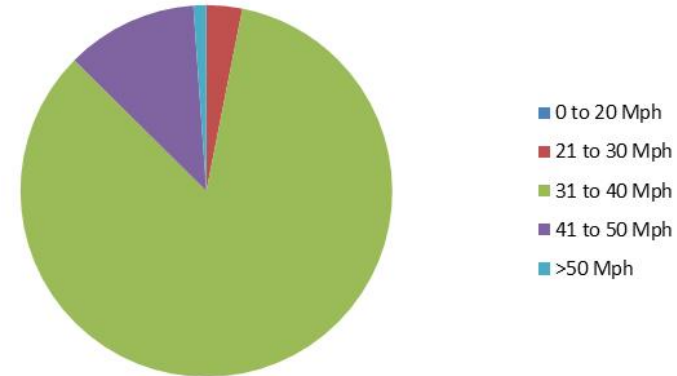
Average Speed Distribution - Outgoing March



Maximum Speed Distribution - Incoming March



Maximum Speed Distribution - Outgoing March



# Ponsanooth Road Safety Group

Meeting – 30<sup>th</sup> March 2023. 7pm Hall Meeting Room.

## March Average Speed Camera Plots

