

Ponsanooth Road Safety Group

Meeting – 26th January 2023. 7pm Hall Meeting Room.

Attendees – Hannah, Darren W, David, Sally, Darren L, Steve Sandercock

Agenda:

1. Minutes Approval
2. Apologies
3. Solar Speed Camera – Data Review
4. Second Portable Speed Camera Funding Update
5. Speed Watch Update
6. Village Gateway
7. Footpaths
8. Any Other Business
9. Next Meeting

Minutes

1. Apologies

Lorna, Pam

2. Approval of last meetings minutes

Group approved last meetings minutes.

3. Solar Speed Camera Data Review

The data for the months of December and January were downloaded from the sign for review.

The sign records the number of vehicles and the average speed for the total number of vehicles every half hour. It also records the maximum speed registered within each half hour block. It records traffic travelling in both directions.

December and January Statistical Summary – Location: Village Hall St Michaels Road Westbound

DIRECTION	AVERAGE SPEEDS			NUMBER MEASUREMENTS/VECHICLES	MIN MAXIMUM SPEED	MAX MAXIMUM SPEED
	MEAN SPEED	MEDIAN SPEED	MODAL SPEED			
Incoming - Westbound	21.62	20.55	21.00	85,575	16	63
Outgoing - Eastbound	23.77	22.72	27.00	101,132	17	62

The Incoming data is recording the traffic flow down the hill past the Village Hall, and the Outgoing data is the traffic travelling up the hill out of the village.

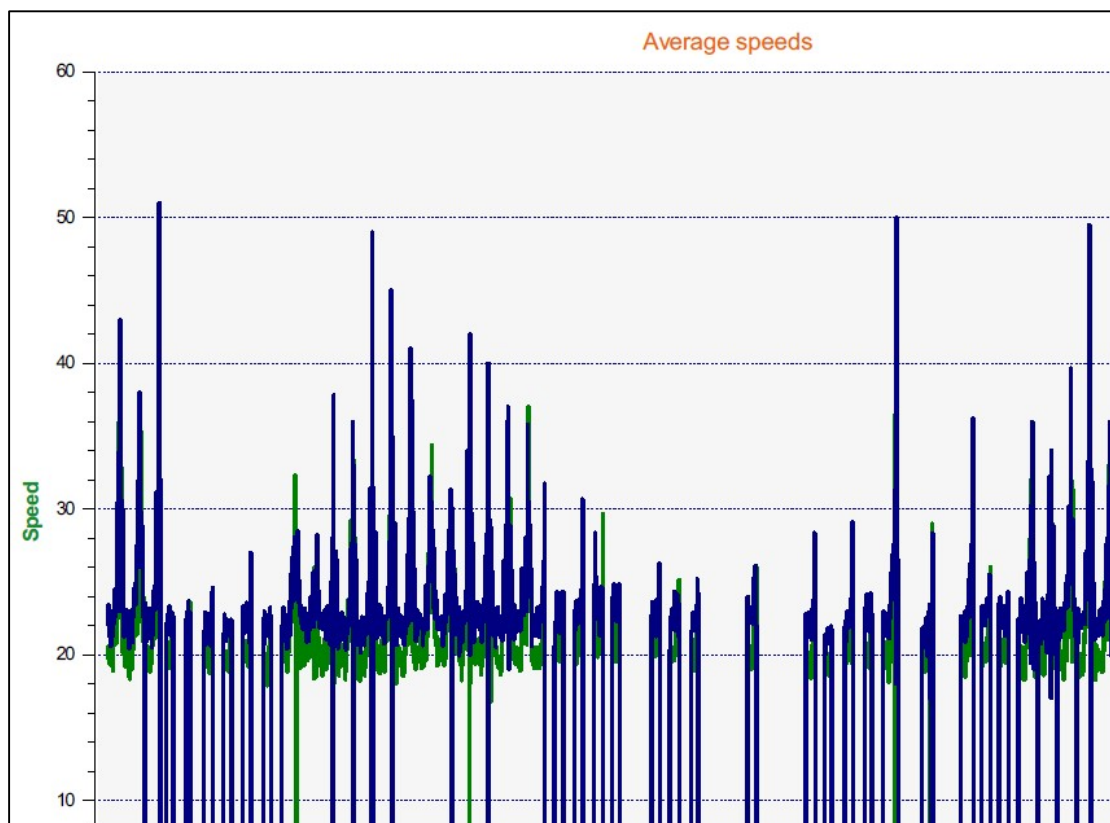
The mean (average, average speed recorded) and modal (most common average speed recorded over the month) are very similar in both directions compared to the previous data reviewed since installation. The number of measurements has increased for this month as the review takes in two not one months data.

Out of interest the maximum speeds recorded for incoming and outgoing traffic over the two month period were recorded between 10pm and midnight. Corresponding with previous trends, speeds increase on the road as traffic volumes decrease between 7pm and 7am.

The average speed distribution pie charts (attached to these minutes) show that for the months of December and January the greatest percentage of vehicles travelling into the village past the speed monitor on St Michaels road are between 0 Mph and 20 Mph. The highest percentage of vehicles travelling out of the village is travelling at 21 Mph to 30 Mph. This pattern is similar to the previous months data since the sign has been installed.

When the average speeds for each half hour data set are plotted against the time of day it is clear to see that the average speed distributions between midnight and 7am are the highest with the biggest range between readings. During the peak times of 7am and 7pm the average speeds recorded are generally lower with a narrower range of speeds recorded over the half hour period. Average speeds then trend upwards from 7pm until midnight but with a narrower range than those recorded in the early hours of the morning. These plots will be useful to help identify ideal times for speed watch surveys to support the speed monitor data. Scatter plots displaying these trends and ranges over the month are attached to the minutes.

It needs noting that the sign has had a significant periods of time over the months of November and December where it has not been functioning – this is most likely due to the battery not having enough charge and also the lack of solar power due to weather conditions. The plot below shows clearly all the times the sign has been inactive. This is mainly overnight and in the mornings.



4. Second Portable Speed Camera Funding Update

Bid for funding has been successful. Waiting on action to deliver the sign. Need to ascertain if a second pole is required to be installed by the bus stop and how this is to be funded.

5. Speed Watch Update

1 survey has been undertaken at Malthouse Close in January.
One more volunteer has been trained.
10 vehicles reported as a result of the session.

Correlation of the speed sign and speed watch survey data needs to be undertaken so we can look into rotating the sign to alert traffic coming up the hill to their speeds.

6. Village Gateway

Gateway positions and features have been decided on. No date at present as to when they are to be installed.

7. Footpaths

Need to look into land ownership in the areas outlined on the plans (see appendix).

8. Any Other Business

- Rail halt update – waiting on further information from NDP group.
- Man hole covers loose on the St Michaels Road – can report these online.
- St Andrews Terrace – potholes marked for repair.

9. Date of next meeting

Thursday 23rd February, 7pm, Village Hall

Current Projects:

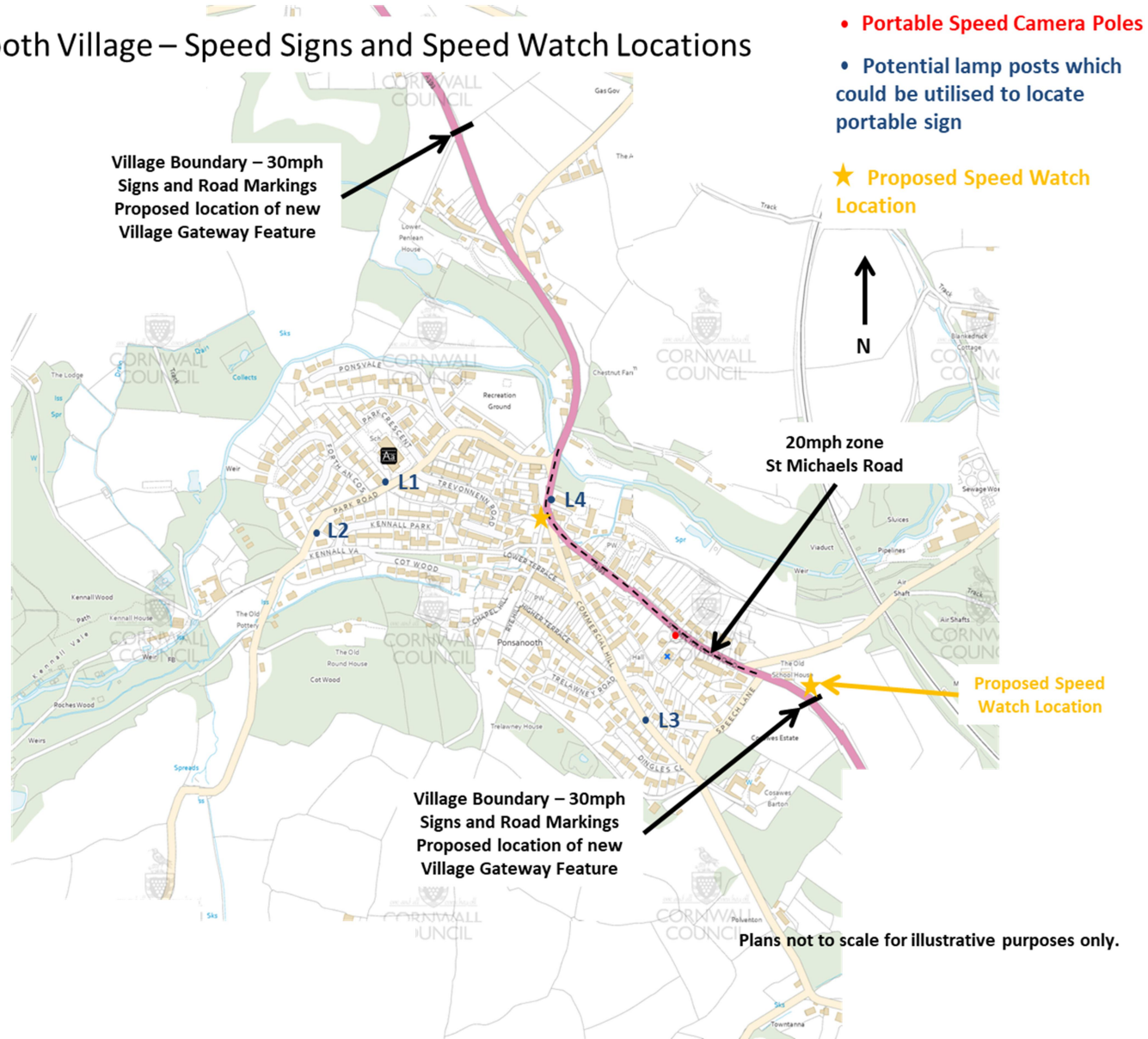
- 30mph Wheelie Bin Stickers – distribute to properties at the Western End of St Michaels Road in the 30mph zone.
- Village Gateways – Design and location will be consulted at on in the near future all being well.
- Pavement Widening Opposite the Stag Hunt Inn – looking at alternative funding streams.
- H Lines on St Michaels Road Driveways
- Safer Streets Project with Village School
- Poplar Cottage Safer Pedestrian Area – Peter Williams Councillor to contact residents.
- Footpaths – to come under a new sub-group.
 - Link from Western End of the Village to Village Centre – 10k of funding from the old garage developer to put in the footpath link.
 - Link from village centre to Viaduct works and Cosaws.
- Parking Issues in the village
 - Island adjacent to the Stag Hunt Inn.
 - St Andrews Terrace.
 - Commercial Hill.

- Planters – need to decide on locations in the village when received them after the Jubilee.
- Speed Limit Zones and Signage – including Lower Treluswell 60mph zone.

Ponsanooth Road Safety Group

Meeting – 26th January 2023. 7pm Hall Meeting Room.

Ponsanooth Village – Speed Signs and Speed Watch Locations



Northern Village Proposed Footpath Location



Southern Village Proposed Footpath Location



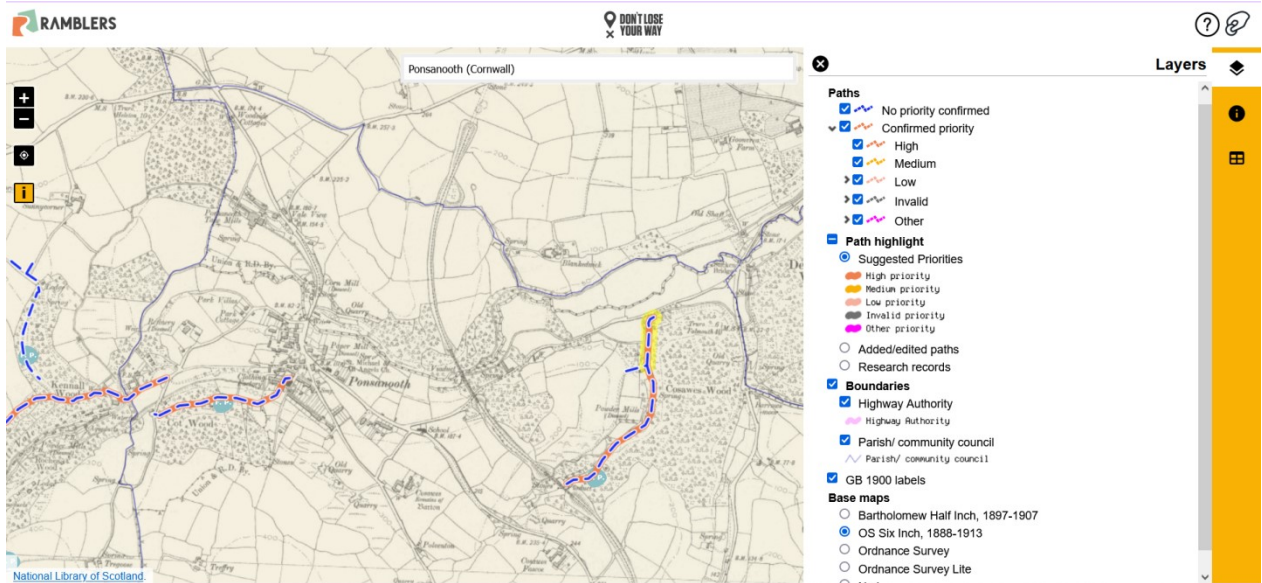
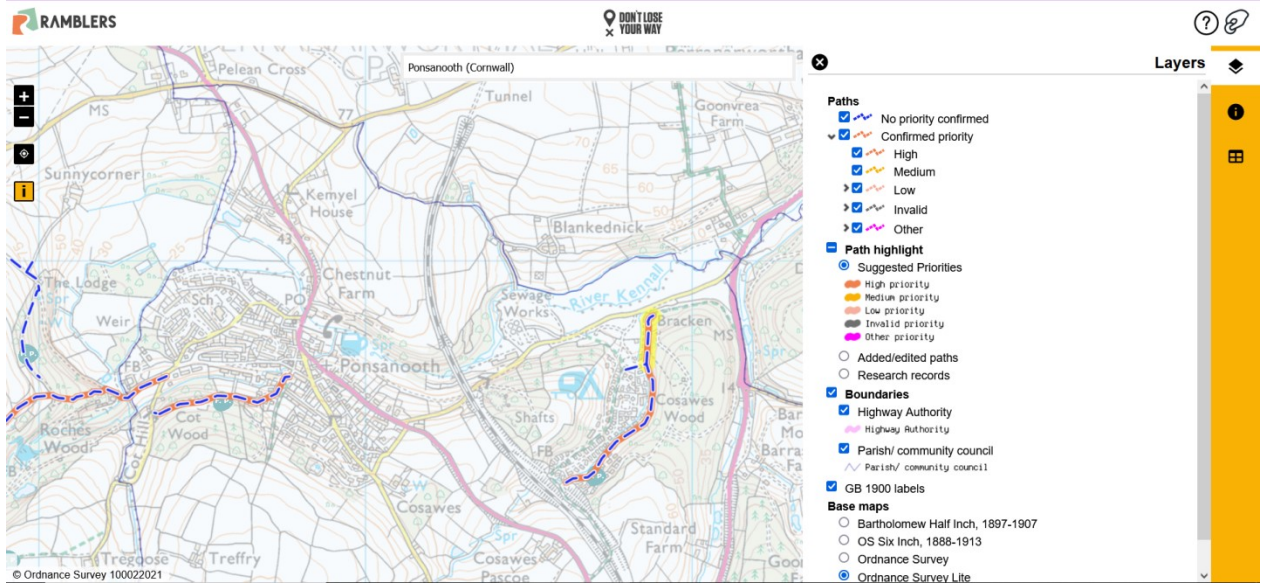
Southern Village Proposed Footpath Location 1888 map



Ponsanooth Road Safety Group

Meeting – 26th January 2023. 7pm Hall Meeting Room.

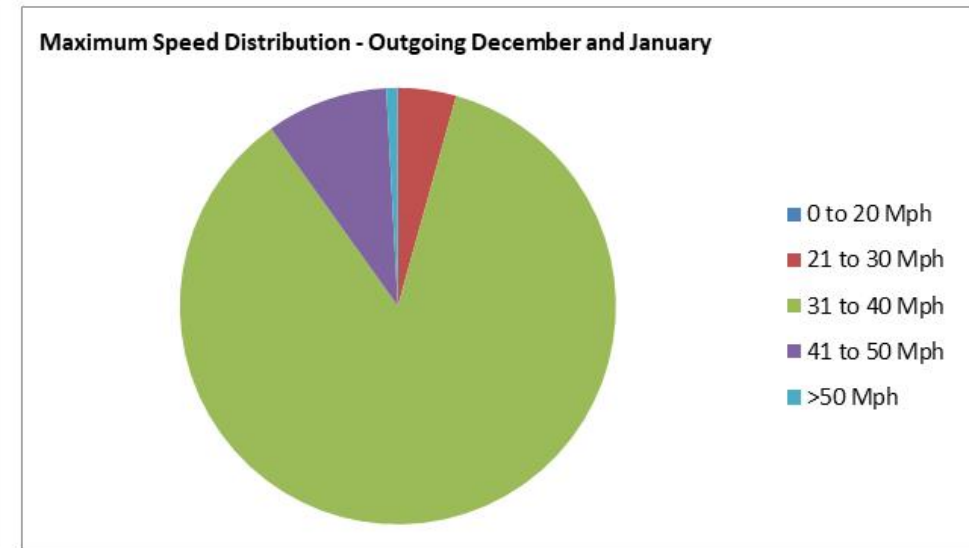
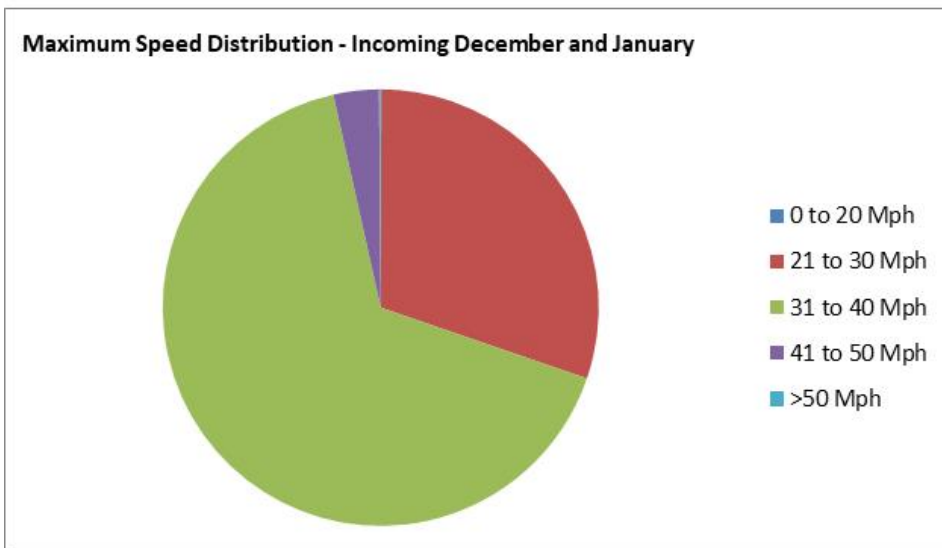
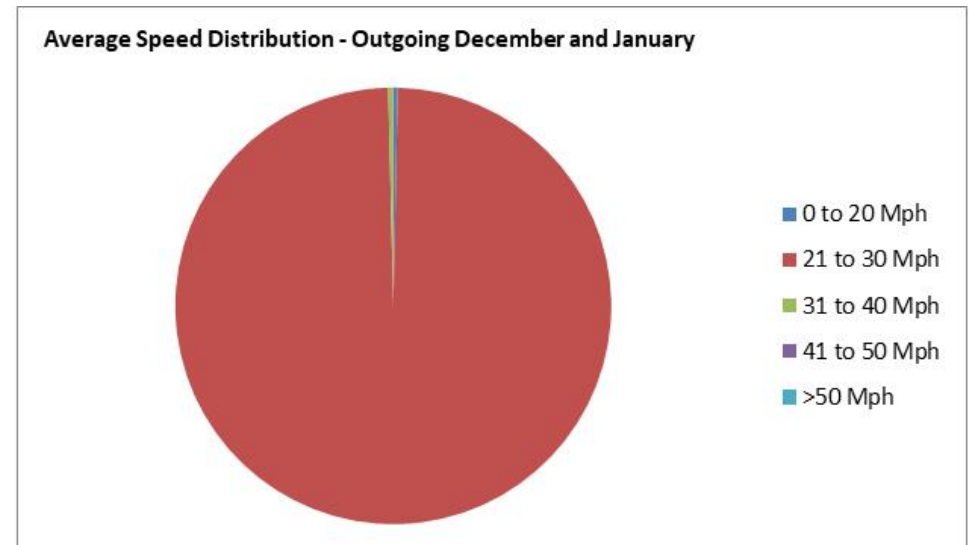
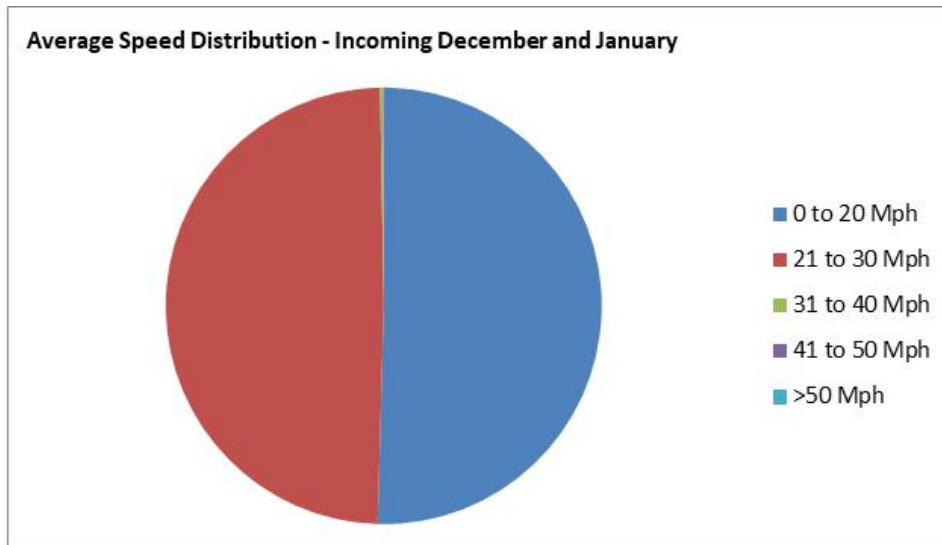
Ramblers Lost Footpath Campaign Map – Map Area includes the two proposed footpath locations



Ponsanooth Road Safety Group

Meeting – 26th January 2023. 7pm Hall Meeting Room.

November Average Speed Camera Plots



Ponsanooth Road Safety Group

Meeting – 26th January 2023. 7pm Hall Meeting Room.

December and January Average Speed Camera Plots

