

Ponsanooth Road Safety Group

Meeting – 1st December 2022. 7pm Hall Meeting Room.

Attendees – Darren W, Chris D, Lorna, David, Sally, Pam

Agenda:

1. Minutes Approval
2. Apologies
3. Solar Speed Camera – Data Review
4. Second Portable Speed Camera Funding Update
5. Speed Watch Update
6. Village Gateway
7. Any Other Business
8. Next Meeting

Minutes

1. Apologies

Hannah, Darren L

2. Approval of last meetings minutes

Group approved last meetings minutes.

3. Solar Speed Camera Data Review

The data for the month of November was downloaded from the sign for review.

The sign records the number of vehicles and the average speed for the total number of vehicles every half hour. It also records the maximum speed registered within each half hour block. It records traffic travelling in both directions.

October Statistical Summary – Location: Village Hall St Michaels Road Westbound

DIRECTION	AVERAGE SPEEDS			NUMBER MEASUREMENTS/ VEHICLES	MIN MAXIMUM SPEED	MAX MAXIMUM SPEED
	MEAN SPEED	MEDIAN SPEED	MODAL SPEED			
Incoming - Westbound	22.35	21.25	26.00	75,339	17	62
Outgoing - Eastbound	24.36	23.00	28.00	74,100	16	73

The Incoming data is recording the traffic flow down the hill past the Village Hall, and the Outgoing data is the traffic travelling up the hill out of the village.

The mean (average, average speed recorded) and modal (most common average speed recorded over the month) are very similar in both directions compared to the previous data from September and October.

Out of interest the maximum speed of 62 Mph for the Incoming traffic was recorded between 00:00 and 00:30 on Friday 25th November 2022. The maximum speed of 73 Mph for

traffic travelling up the hill (outgoing) was recorded between 11:00 and 11:30 on Monday 14th November 2022.

The average speed distribution pie charts (attached to these minutes) show that for the month of November the greatest percentage of vehicles travelling into the village past the speed monitor on St Michaels road are between 0 Mph and 21 Mph. The highest percentage of vehicles travelling out of the village is travelling at 21 Mph to 30 Mph. This pattern is similar to the two previous months.

When the average speeds for each half hour data set are plotted against the time of day it is clear to see that the average speed distributions between midnight and 7am are the highest with the biggest range between readings. During the peak times of 7am and 7pm the average speeds recorded are generally lower with a narrower range of speeds recorded over the half hour period. Average speeds then trend upwards from 7pm until midnight but with a narrower range than those recorded in the early hours of the morning. These plots will be useful to help identify ideal times for speed watch surveys to support the speed monitor data. Scatter plots displaying these trends and ranges over the month are attached to the minutes.

Hannah will email Peter Williams the data analysis he has requested for Devon and Cornwall Police to help activate the Speed Bikes to come and monitor traffic speeds based on the Average Speed Monitor Signs data. These will help enforce the Average Speed Monitor Sign and also the 20 Mph Speed Limit.

For the Speedwatch group it is worth noting that for outgoing traffic the highest maximum speeds have been registered between 11:00 and 11:30 am on multiple days and months. Looking at the data it seems higher maximum speeds are common at this time. It may be a good time period to undertake a monitoring session in.

4. Second Portable Speed Camera Funding Update

Should get funding for second camera, by bus shelter coming from Redruth, needs another pole, too heavy for existing one

5. Speed Watch Update

- 12 people trained.
- New site, field gate, used today, most motorists saw camera and slowed, one swore, 200+ cars, no speeding.
- Can't be done where traffic calming in place ie Commercial Hill.
- Has to be done in daylight for safety.

Action: Loran to put up Facebook post in the New Year.

6. Village Gateway

Cormac have said no, then maybe.

Chris D has asked for signs to reflect historical significance. 2 sign options, one chosen saying World Heritage. Limited place to put sign.

World Heritage Site does not include Magdalen Mine, no engine houses remain

7. Any Other Business

- 30 mph needs moving to include Pelean Cross. Roundabout needed there.
- Frog Hill still 60 mph. Footpath needed.
- Lower Treluswell needs reduced speed limit.
- Commons Lane, ownership still unknown, Parish possibly owns it.

Current Projects:

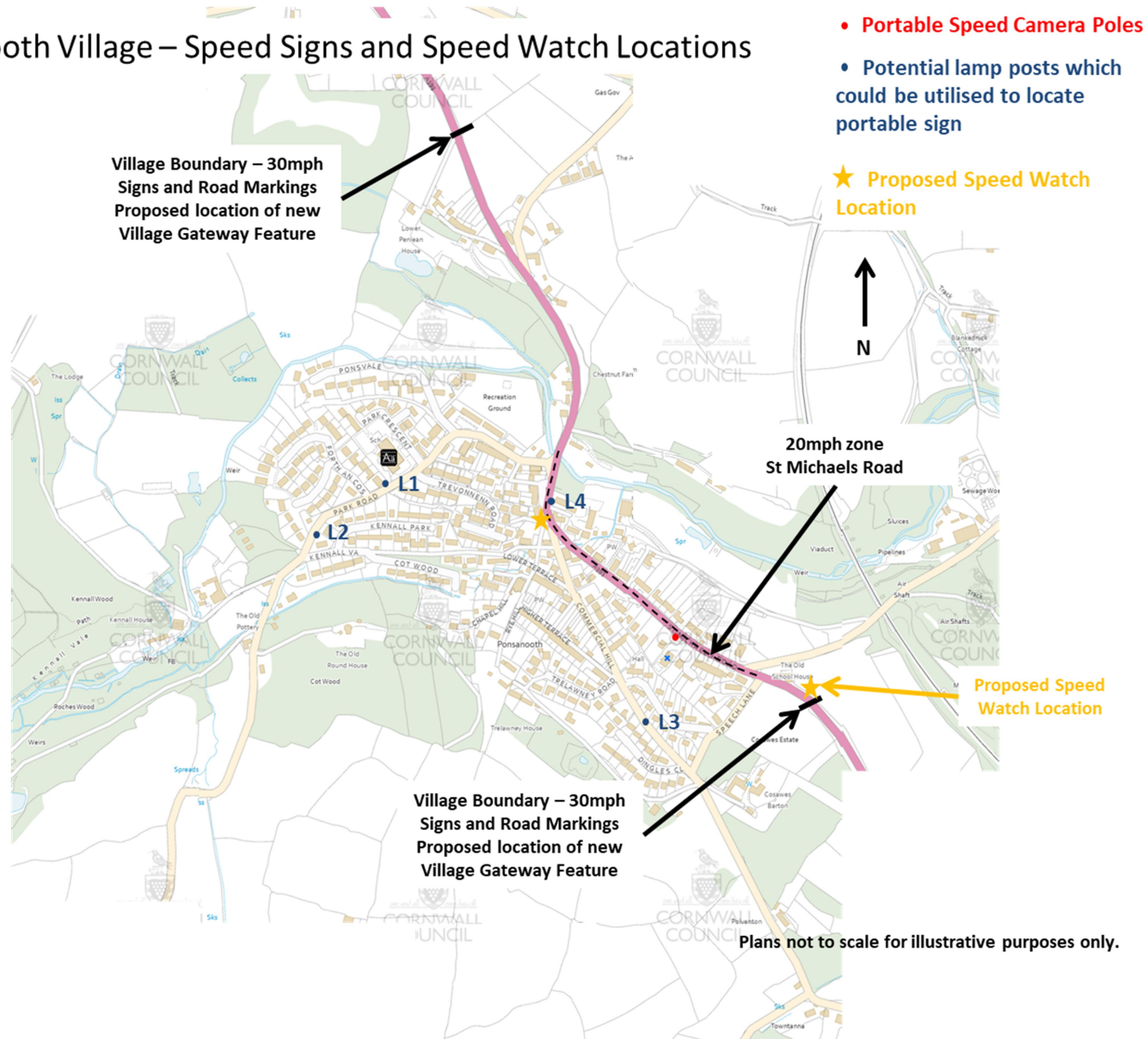
- 30mph Wheelie Bin Stickers – distribute to properties at the Western End of St Michaels Road in the 30mph zone.
- Village Gateways – Design and location will be consulted at on in the near future all being well.
- Pavement Widening Opposite the Stag Hunt Inn – looking at alternative funding streams.
- H Lines on St Michaels Road Driveways
- Safer Streets Project with Village School
- Poplar Cottage Safer Pedestrian Area – Peter Williams Councillor to contact residents.
- Footpaths – to come under a new sub-group.
 - Link from Western End of the Village to Village Centre – 10k of funding from the old garage developer to put in the footpath link.
 - Link from village centre to Viaduct works and Cosaws.
- Parking Issues in the village
 - Island adjacent to the Stag Hunt Inn.
 - St Andrews Terrace.
 - Commercial Hill.
- Planters – need to decide on locations in the village when received them after the Jubilee.
- Speed Limit Zones and Signage – including Lower Treluswell 60mph zone.

Date of next meeting:

Ponsanooth Road Safety Group

Meeting – 1st December 2022. 7pm Hall Meeting Room.

Ponsanooth Village – Speed Signs and Speed Watch Locations



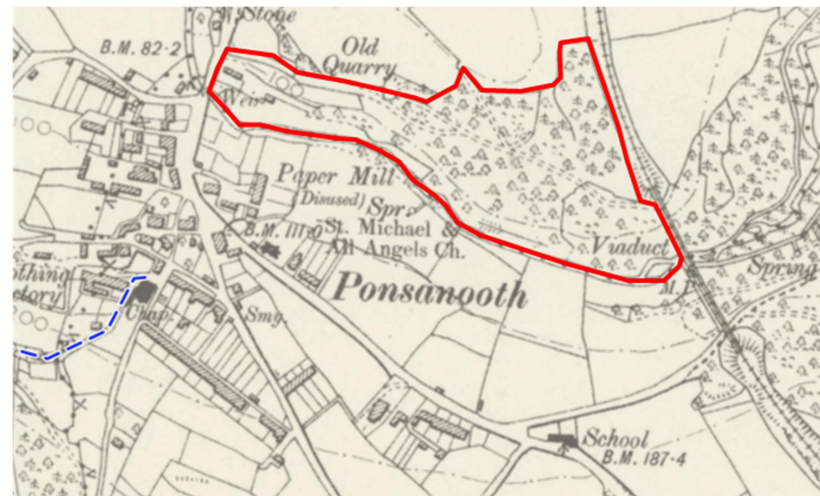
Northern Village Proposed Footpath Location



Southern Village Proposed Footpath Location



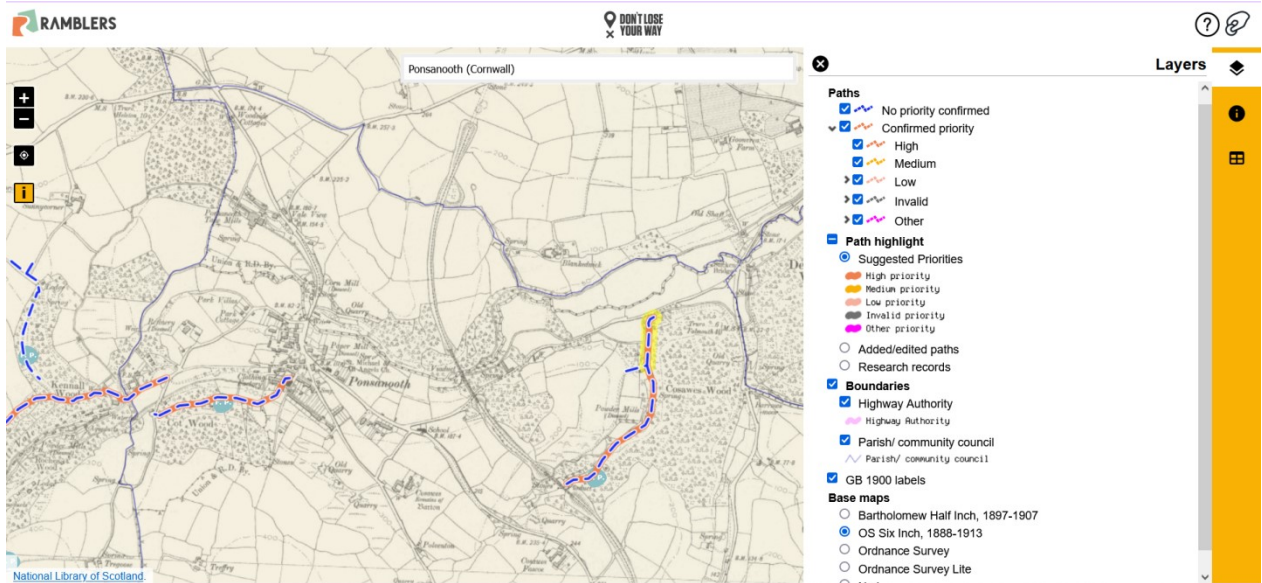
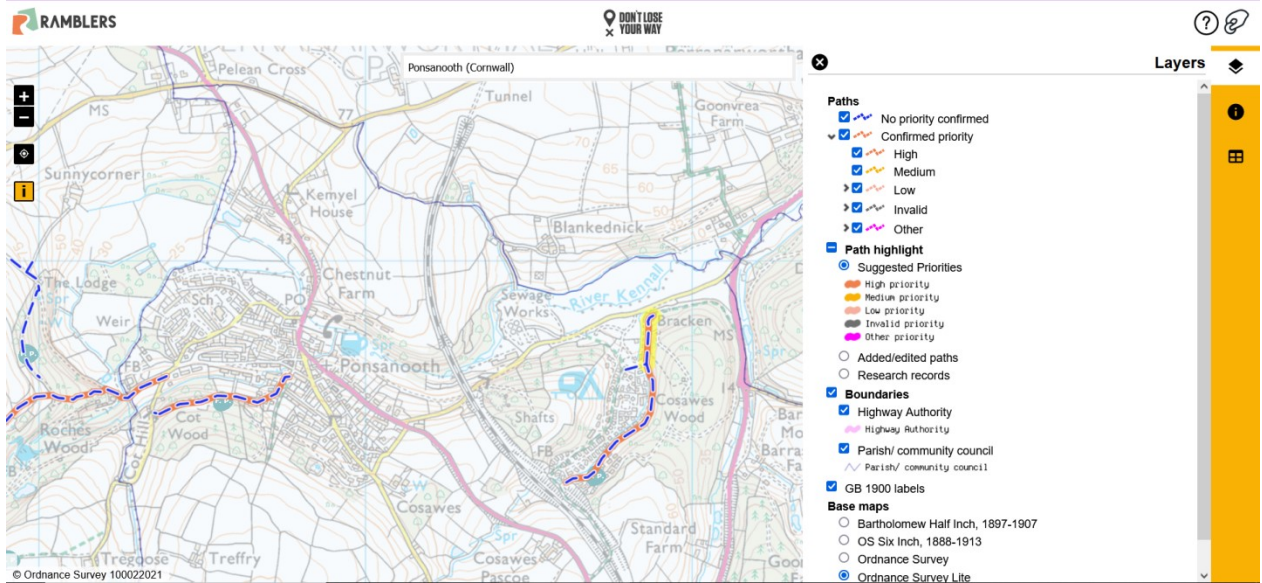
Southern Village Proposed Footpath Location 1888 map



Ponsanooth Road Safety Group

Meeting – 1st December 2022. 7pm Hall Meeting Room.

Ramblers Lost Footpath Campaign Map – Map Area includes the two proposed footpath locations

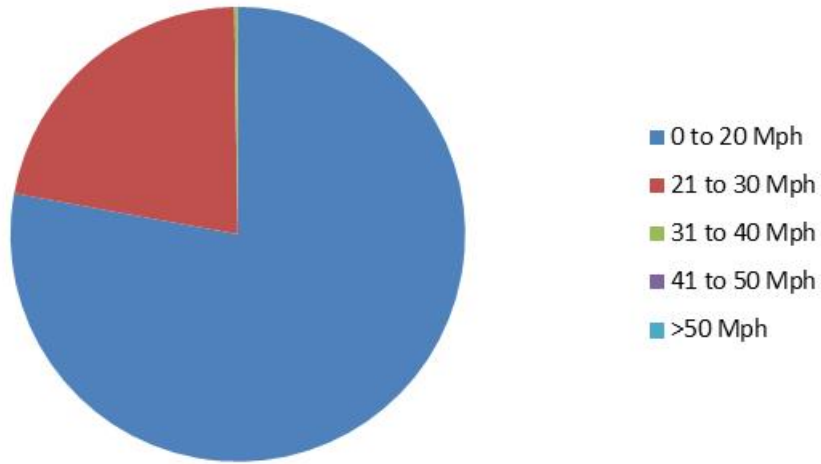


Ponsanooth Road Safety Group

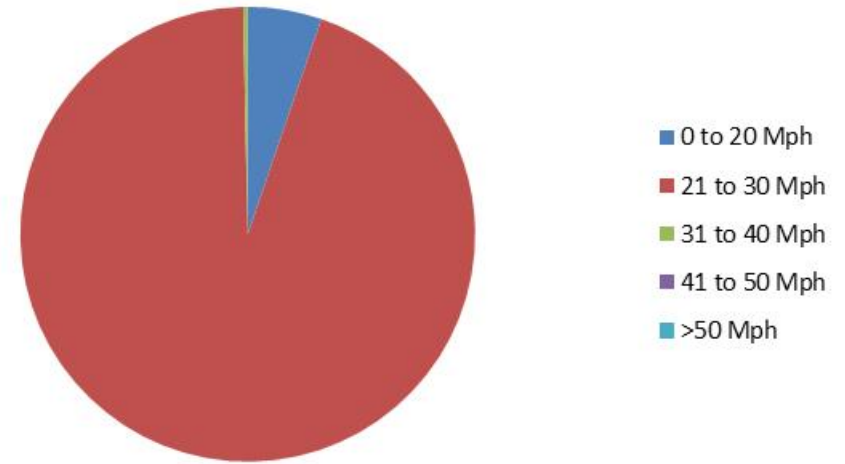
Meeting – 1st December 2022. 7pm Hall Meeting Room.

November Average Speed Camera Plots

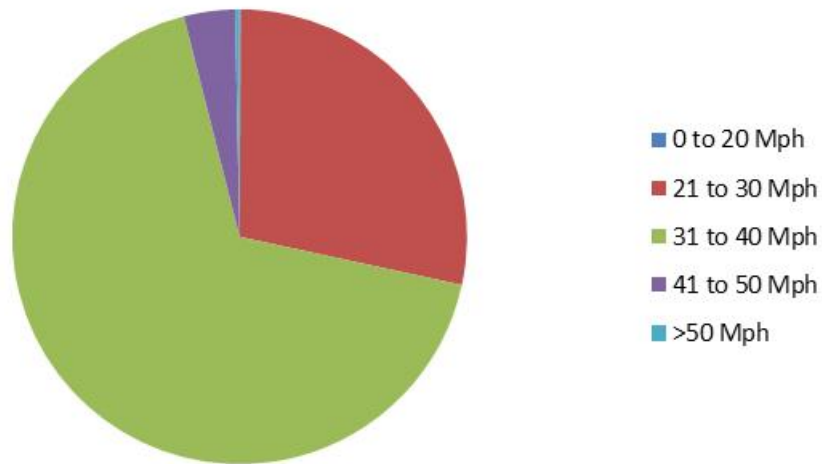
Average Speed Distribution - Incoming November



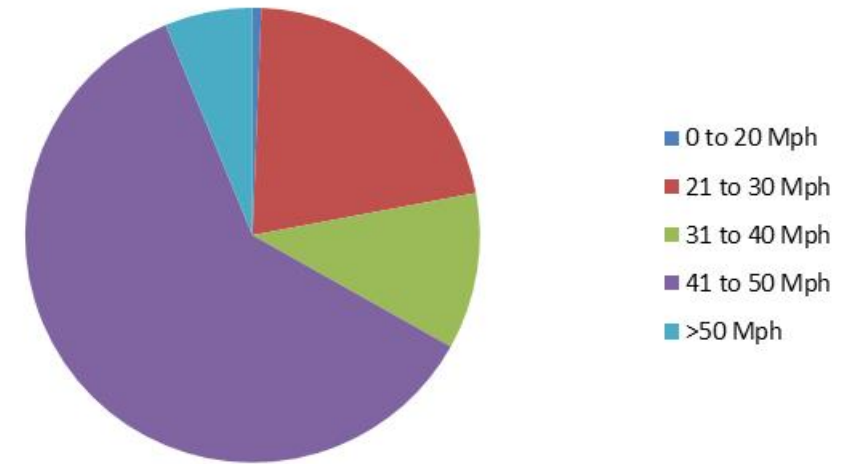
Average Speed Distribution - Outgoing November



Maximum Speed Distribution - Incoming November



Maximum Speed Distribution - Outgoing November



Ponsanooth Road Safety Group

Meeting – 1st December 2022. 7pm Hall Meeting Room.

November Average Speed Camera Plots

